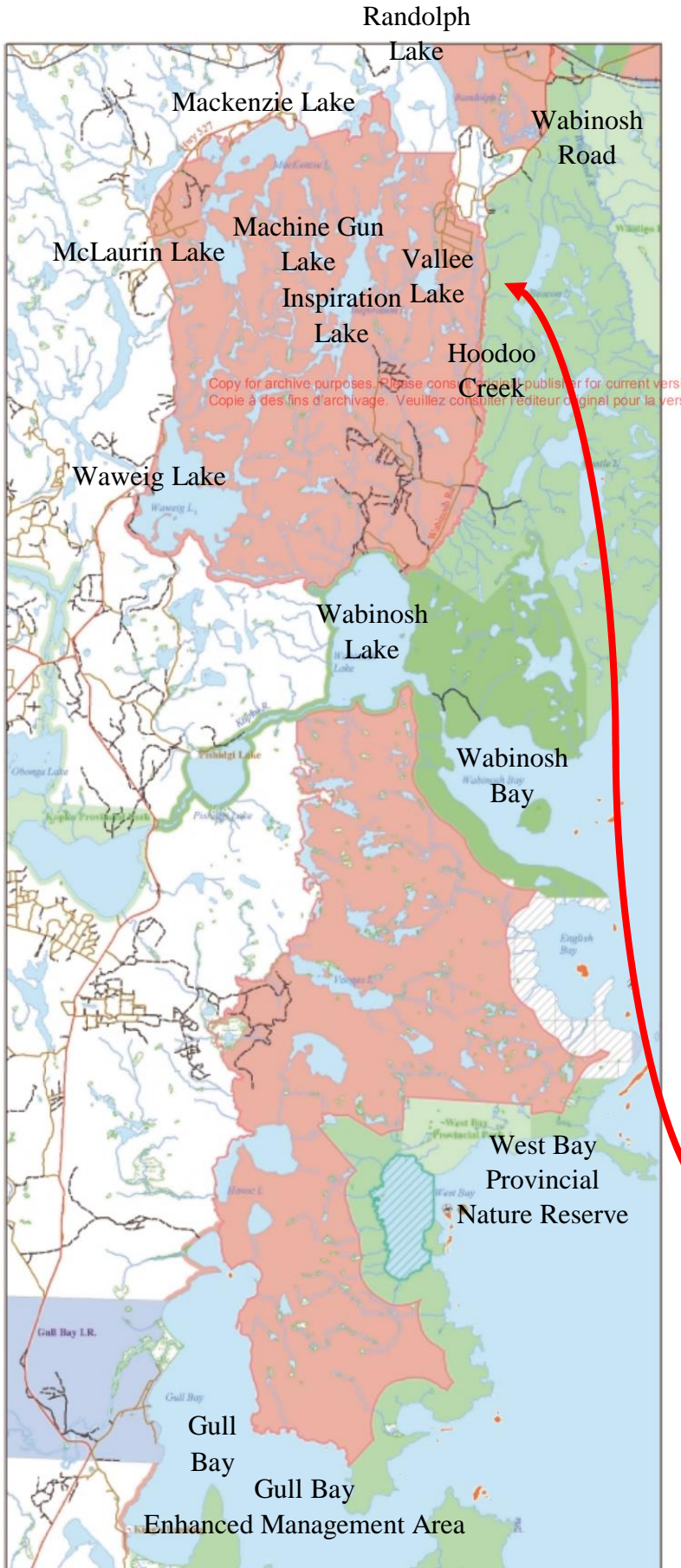


# West Lake Nipigon Enhanced Management Area\*

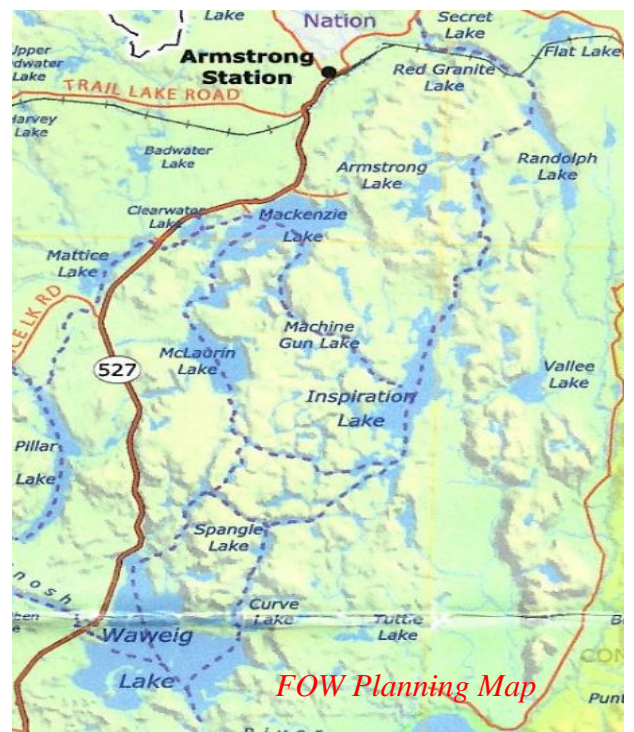


## 6.1.4 Canoe Routes and Trails

Opportunities for developing good quality canoe routes, portages, remote campsites and trails will be promoted and encouraged through partnerships or as tourism ventures. This could include developing/improving campsites, portages and providing fire rings and box privies. There are a number of interconnecting lakes in the northern half of the enhanced management area that could potentially be developed as a canoe route. Further investigation is required. The potential route is circular and includes Waweig, MacKenzie and Machine Gun lakes.

Portions of the enhanced management area contain cliffs and canyons which offer the opportunity for the establishment of lookouts. Canoe route opportunities could be promoted through cruiser boat operations or tourism operations out of Armstrong.

A trail development opportunity may exist at the southernmost boundary of the EMA along the northeast shore of Gull Bay. This area is very scenic and offers the opportunity to develop a hiking trail to the top of the escarpment. Field surveys would be required to ensure that any trail development would not negatively affect values such as rare vegetation or cultural sites. This opportunity may be of interest to Gull Bay First Nation, and could be tied in with other possible, future tourism/access development in the Gull Bay Enhanced Management Area.



\*Lake Nipigon Basin Signature Site – Ecological Land Use and Resource Management Strategy